

FA LF45 E12

4X2 RIGID

AT A GLANCE

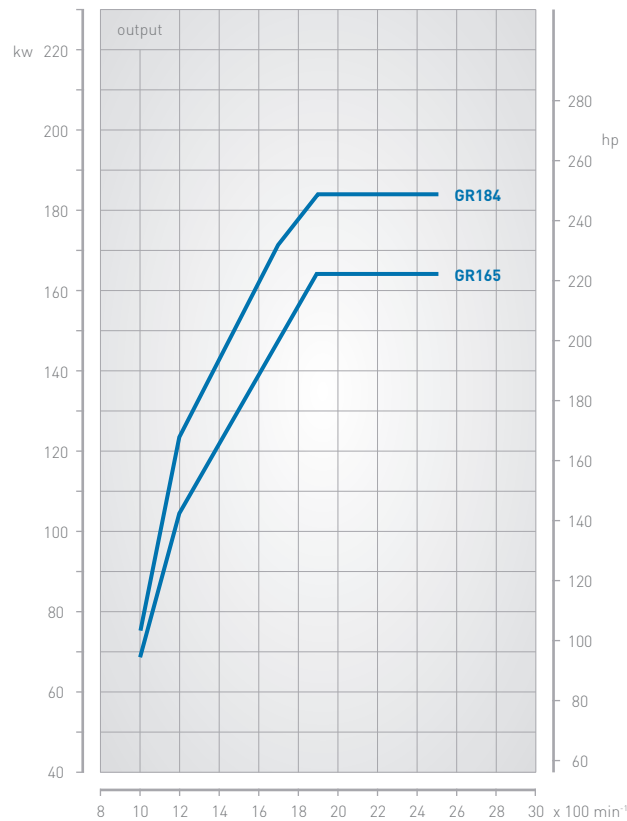
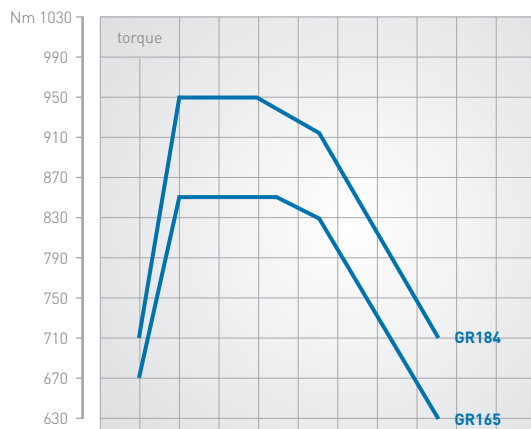
GVM:	12000 kg
GCM:	18000 kg
Max Output:	Up to 250 hp at 1900 rpm
Max Torque:	Up to 950 Nm at 1200 – 1700 rpm



SPECIFICATIONS

PACCAR GR ENGINE

PACCAR:	6 cylinder, turbo intercooled
Piston displacement:	6.7 litres
Fuel injection:	Electronically controlled common rail
Type:	GR 165
Max. output:	165 kW / 220 hp at 1900 rpm
Max. torque:	850 Nm at 1200 – 1700 rpm
Type:	GR 184
Max. output:	184 kW / 250 hp at 1900 rpm
Max. torque:	950 Nm at 1200 – 1700 rpm



CHASSIS

Completely flat-topped ladder type chassis frame; Riveted and bolted construction of channel-section main frame members and cross members; 168-litre steel fuel tank; Fuel tank height – 388 mm; 1x26 litre Adblue tank; Horizontal line type exhaust silencer inside the chassis frame; Spare wheel carrier with spare wheel; Dimensions main frame members: 192 x 66.5 x 4.5 mm; Spray suppression; Front Underrun Protection (FUP); 4.65m wheelbase.

Options:

- Wheelbase: 3.55m, 3.90m, 4.30m, 5.00m

GEARBOX

6S800: 6 speed ZF gearbox

Options:

- 6AS1000: 6 speed, automated manual, ZF AS Tronic transmission

	GR 165	GR 184
6S800-6.58/0.78	X	X
6AS1000-6.75/0.78	X	X

CLUTCH

Single type, pushed operation, asbestos free, dry plate, hydraulically operated and pneumatically assisted, electronically operated on AS Tronic.

Diameter: 395 mm

FRONT AXLE

Type: F48

Max. design load: 4500 kg

I-section axle. Stub axles with needle bearings.

REAR AXLE

Type: SR 8.20

Max. design load: 8500 kg

Single reduction driven axle.

Ratio 4.10

Options:

- Type: SR 10.20

Lockable differential

FRONT SUSPENSION

Parabolic type leaf springs with swinging shackles at rear. Maintenance free construction including shock absorbers and stabilizer.

Spring dimensions: 1x1900x75x34 (4500 kg)

REAR SUSPENSION

2-bag air suspension.

Options:

- Parabolic type leaf springs (10500 kg) with sliding ends at rear
-

WHEELS AND TYRES

17.5" x 6.75 (8 stud) steel disc wheels, with 245 / 70 R 17.5 tubeless radial tyres at front and rear; Twin wheels at rear; Spare wheel with tyre.

STEERING

Type: Hydraulic power steering with adjustable steering column for rake.

COLOURS

Cab colour: M8870 Ice White
Chassis colour: Black
Mirror cover: Black
Bumper colour: Grey

Options:

- Various non-standard and metallic cab and chassis colours available. Ask your local dealer for a colour guide

BRAKE SYSTEM

Dual-circuit air operated disc brakes at front and rear. Asbestos free brake pads.

Disc Brake dimensions: 375 x 45 mm

Emergency/parking brake with spring brake actuators on rear axles; Pneumatic operated exhaust brake (165kW at 3200rpm); ABS.

Options:

- ASR (Acceleration Slip Control)
-

ELECTRICAL EQUIPMENT

Voltage: 24 V
Alternator: 80 A
Batteries: 2 x 175 Ah
Starter Motor: 24 V
Rear light units: Incorporating direction indicator light, stop light, reversing light, side marker light and reflector; Reverse warning alarm.
Battery Isolation: Main switch with manual control located near the battery box.

TRAILER EQUIPMENT

Optional

CAB EXTERIOR

F213 tilt Day Cab with 4 point maintenance free suspension, hydraulic tilting gear; Tilting angle 55°; Heated main and wide angle mirrors for body width up to 2.50 m; Electric adjustable main mirrors and wide angle mirrors; Fixed, illuminated cab steps; Steel front bumper with foot hold; Rear window; Raised air intake.

Options:

- Sleeper cab
 - Roof hatch
 - Raised air intake (Sleeper cab)
 - External sun visor
 - Adjustable roof spoiler / side extenders
 - Combi lights, incorporating driving and fog lights in lower bumper
-

CAB INTERIOR

High quality trim and upholstery in natural camel-grey colour; Cab floor cover includes easy-clean top layer in camel-grey; Cockpit style dashboard, including DIP (Driver Information Panel) and Adblue indicator; Adjustable luxury air suspended driver seat and fixed co-driver seat with head restraint; Various storage facilities including two cup holders, containers behind seat and overhead compartments; 4 spoke, soft grip steering wheel with integrated control switches; Electric window openers (driver and passenger); Cruise control; Personal road speed limiter; Black dashboard finish; Integrated 3-point seat belt; Air conditioning; Radio/CD/MP3 player with 2 speakers; Antennas: 1 x GSM; Remote control door lock.

Options:

- 3rd seat (Day Cab only)
- Driver luxury air / passenger dual mate
- Driver luxury air / passenger luxury dual mate
- SRS Air Bag
- Hands free telephone kit*

* Subject to phone compatibility

LEGAL COMPLIANCE

- Exhaust Emission Euro 5 ADR 80-03
 - ADR 83 Noise Certification
 - ECE R29 Cab Certification
 - Front Underrun Protection Certification
-

APPLICATION CONDITIONS

Raised air intake on cab roof; Reverse warning; Standard tool kit; Moisture separator.

MAX. SPEED

All vehicles are speed limited to 100 km/h.

Depending on the vehicle configuration a specific option may not be possible. All weights and measurements should be regarded as approximate only. In the interests of product improvements, DAF Trucks Australia, reserve the right to change these specifications without prior notice. For further information please contact DAF Trucks Australia.

Distinctly

DAF



SPECIFICATIONS - Safety & Technology

SCR - Selective Catalytic Reduction

DAF uses SCR technology – Selective Catalytic Reduction. This SCR technology offers an effective solution to comply with the strict European Euro 5 and EEV emission requirements. SCR technology is simple, reliable and efficient.

SCR is an after-treatment system applied to all current PACCAR Euro 5 engines, and is used in conjunction with an advanced high-pressure fuel injection system.

EEV - Environmentally Enhanced Vehicles

DAF is able to deliver trucks that comply with the standard for Enhanced Environmentally-friendly Vehicles (EEV). PACCAR's EEV engines emit up to 50% less particulate matter than non-EEV Euro 5 engines. With the EEV diesel engines, DAF is able to achieve emission values that until recently were only considered possible with gas engines.

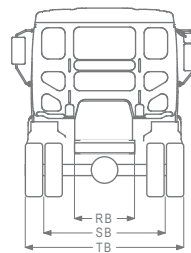
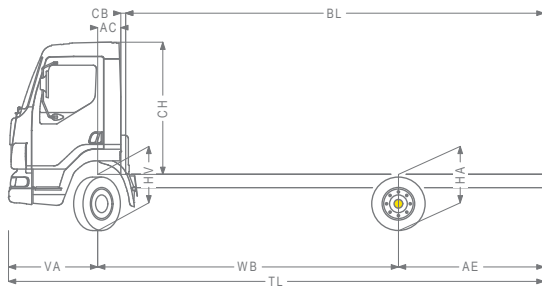
VISION

- Front and side view mirrors

DRIVERS SUPPORT SYSTEMS

- Anti-lock Braking System (ABS)
- Anti-Slip Control (ASR)
- Tyre Pressure Indication
- Seat belt reminder
- Airbag and seat belt pre-tensioners
- Front and rear under-run protection

SPECIFICATIONS - Technical



1. Based on standard Australian axle load limits
2. Higher on application
3. Based on Tyre and Rim Association Handbook
4. Based on Tyre and Rim Association Handbook
5. Chassis and Cab Weight calculated with: Standaard specification items and empty fuel tank. With Sleeper Cab; + 155 kg at front.
6. Other AE dimensions may be available for shown WB. Modify rear overhang to the calculated body length.
7. CB is based on standard air intake and/or exhaust.
8. Cab height is measured from frame member to closed cabin roof hatch.
9. Calculate CUSTOMER SPECIFIC bodylengths with TOPEC
10. Unladen height at centre of driven axle(s).
11. TK = turning circle between kerbs (For comparison purposes only).
12. TW = turning circle between walls (For comparison purposes only).
13. Unladen height at centre of front axle(s).
14. Laden height at centre of front axle(s).

	Wheelbase - AE		Unladen weight ⁽⁵⁾			Gross Carrying Capacity			Variable dimensions									
	WB	AE ⁽⁶⁾	Front	Rear	Total	Front	Rear	Total	AC	CB ⁽⁷⁾	CH ⁽⁸⁾	BL ⁽⁹⁾	BL ⁽⁹⁾	TL	HA ⁽¹⁰⁾	HA ⁽¹¹⁾	TK ⁽¹²⁾	TW ⁽¹³⁾
DAY	3.55	1.87	2607	1050	3657	1893	7450	8343	0.33	0.07	1.89	4.60	5.20	6.70	0.83	0.81	11.50	13.00
	3.90	2.12	2626	1056	3682	1874	7444	8318	0.33	0.07	1.89	5.20	5.80	7.30	0.83	0.81	12.36	13.87
	4.30	2.32	2659	1098	3757	1841	7402	8243	0.33	0.07	1.89	5.80	6.40	7.90	0.83	0.81	13.34	14.87
	4.65	2.65	2667	1125	3792	1833	7375	8208	0.33	0.07	1.89	6.40	7.00	8.57	0.83	0.81	14.20	15.74
	5.00	2.72	2684	1128	3812	1816	7372	8188	0.33	0.07	1.89	6.90	7.60	8.99	0.83	0.81	15.06	16.61
SLEEPER	3.55	1.87	2742	1050	3792	1758	7450	8208	0.73	0.07	1.89	3.90	4.90	6.70	0.83	0.81	11.50	13.00
	3.90	2.12	2761	1056	3817	1739	7444	8183	0.73	0.07	1.89	4.50	5.40	7.30	0.83	0.81	12.36	13.87
	4.30	2.32	2794	1098	3892	1706	7402	8108	0.73	0.07	1.89	5.10	6.00	7.90	0.83	0.81	13.34	14.87
	4.65	2.65	2807	1125	3932	1693	7375	8068	0.73	0.07	1.89	5.70	6.60	8.75	0.83	0.81	14.20	15.74
	5.00	2.72	2819	1128	3947	1681	7372	8053	0.73	0.07	1.89	6.30	7.20	8.99	0.83	0.81	15.06	16.61

Other dimensions	VA: 1.27	HV ⁽¹⁴⁾ : 0.79	HV ⁽¹⁵⁾ : 0.71	RB: 0.86	SB: 1.74	TB: 2.26
-------------------------	----------	---------------------------	---------------------------	----------	----------	----------

WARRANTY

NON-DRIVELINE

- 12 months / unlimited kms

DRIVELINE

- 12-24 months / unlimited kms*; 24-36 months / 200,000 kms*

ENGINE WARRANTY

- The warranty of the Cummins ISBe Engine in LF series vehicles is covered solely by Cummins Australia as per the standard Cummins warranty guidelines for ISBe series engines.

* Whichever occurs first

For full warranty details, please contact your local DAF dealer.